

# MAAP #57: High Resolution Satellite Images of the Flooding in Peru

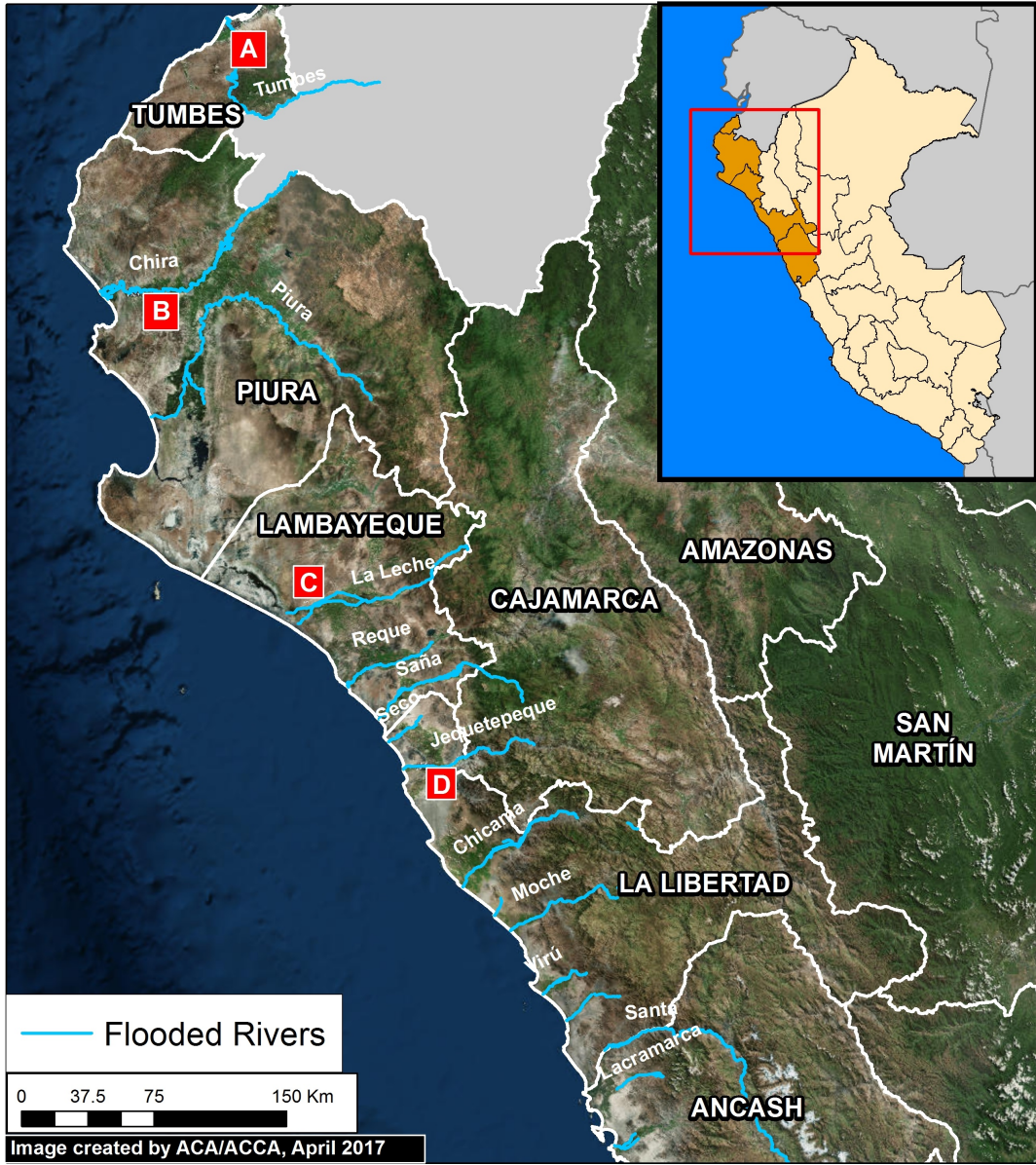


Image 57. Data: ESRI, INEI, MINAM. [Click to enlarge.](#)

In the previous [MAAP #56](#), we showed a series of satellite images of the deadly floods that recently hit northern Peru.

In this report, we show a series of new, **very high resolution satellite images** (50 cm) of the flooding. They show, in striking detail, some of the local impacts, including to croplands and the Panamerican Highway.

**Image 57** shows the **13 rivers** that recently overflowed in northern Peru.

Below, we show images of the flooding around four of the rivers, labelled A-D.

## Tumbes River

**Image 57a** shows the flooding along a stretch of the Tumbes River between October 2016 (left panel) and March 2017 (right panel). The yellow inset boxes indicate the areas of the follow-up zooms.



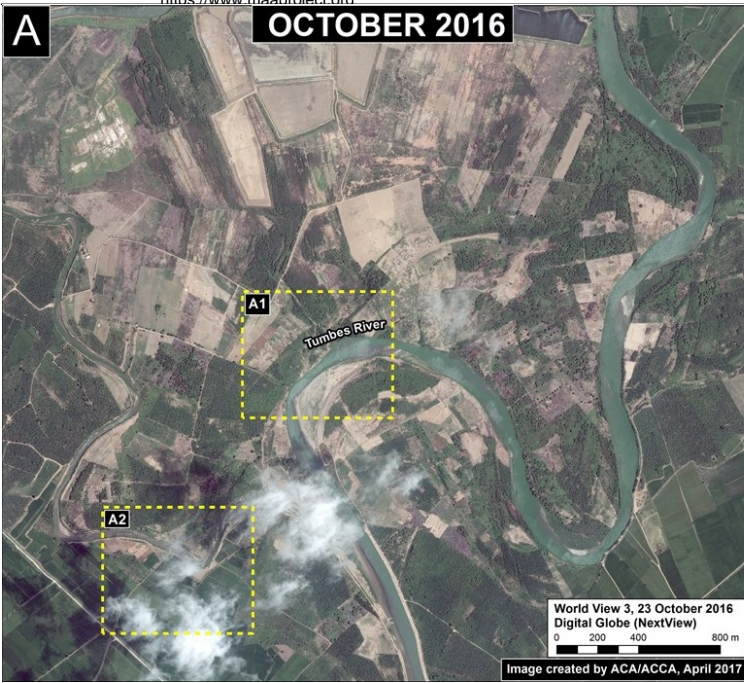
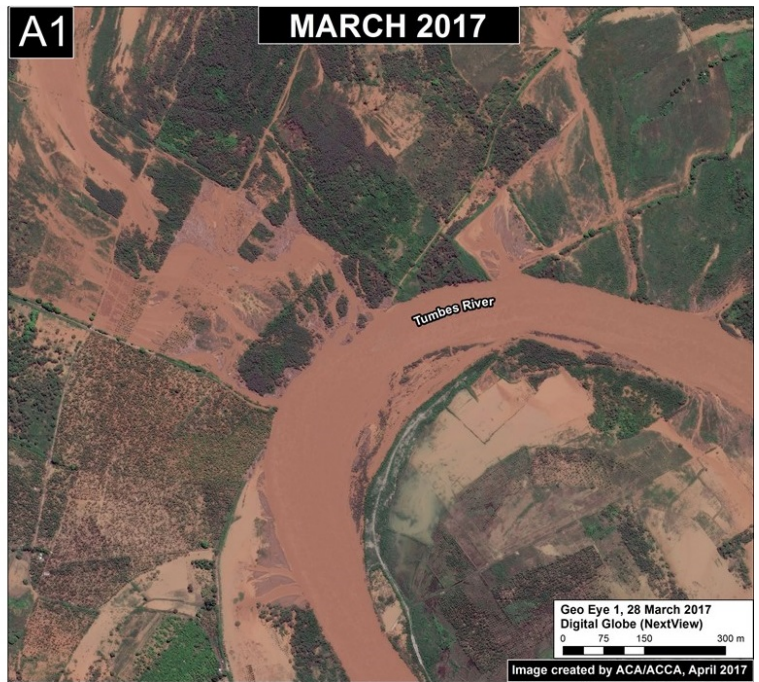
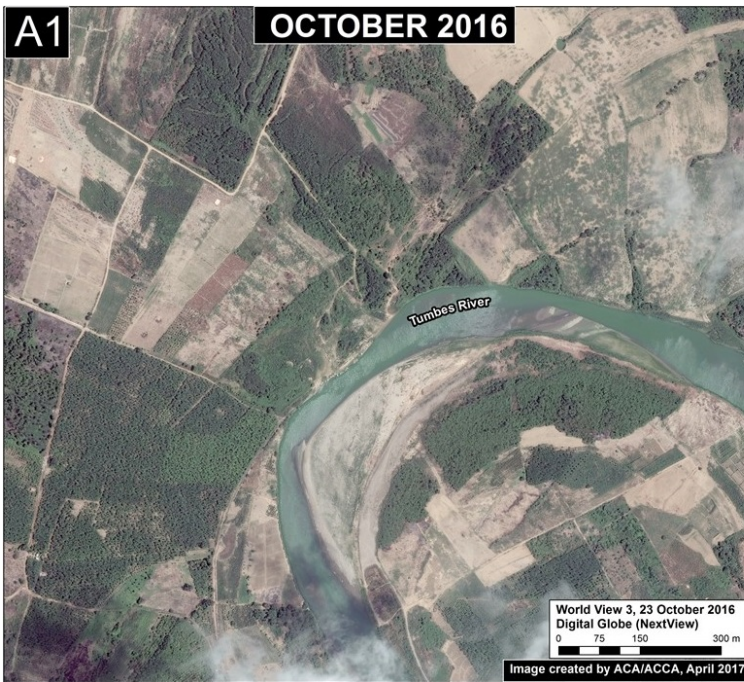


Image 57a. Data: Digital Globe (Nextview)



Inset A1. Data: Digital Globe (Nextview)





Inset A2. Data: Digital Globe (Nextview)

## Chira River

**Image 57b** shows the flooding along a stretch of the Tumbes River between January (left panel) and March 2017 (right panel). The yellow inset boxes indicate the areas of the follow-up zooms.

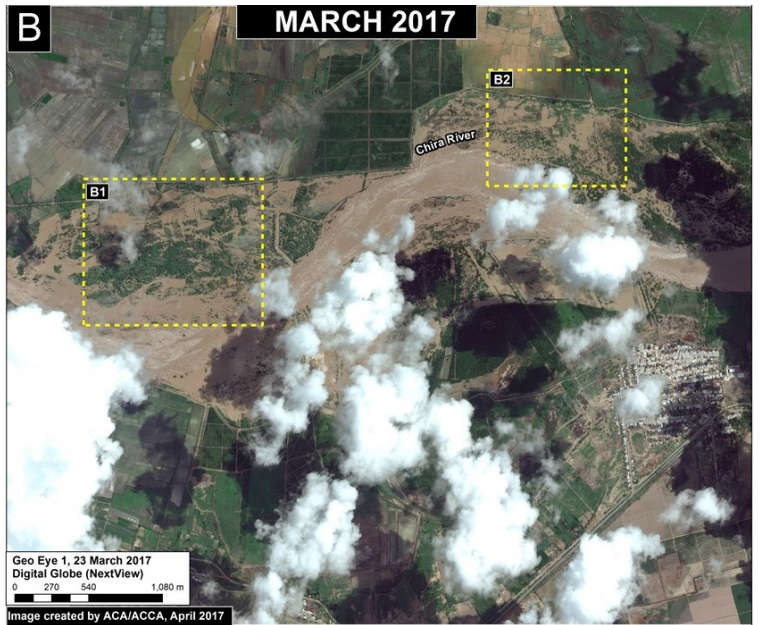
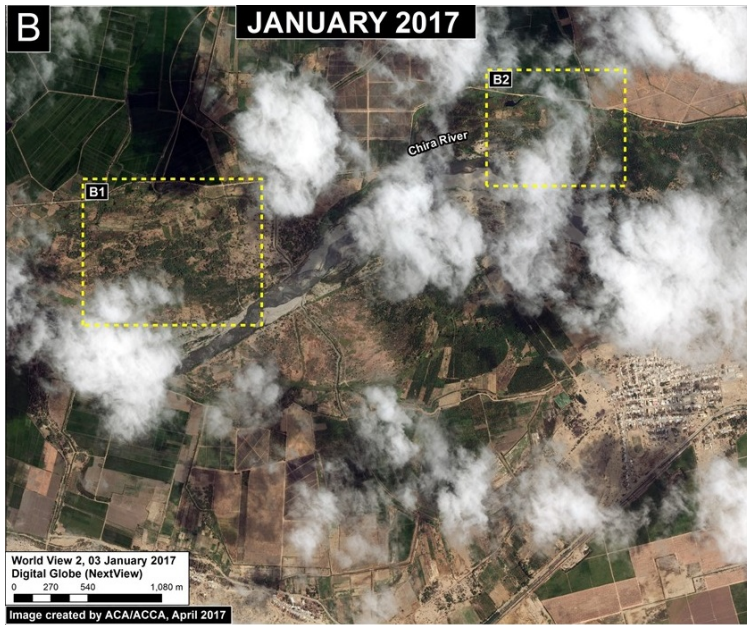
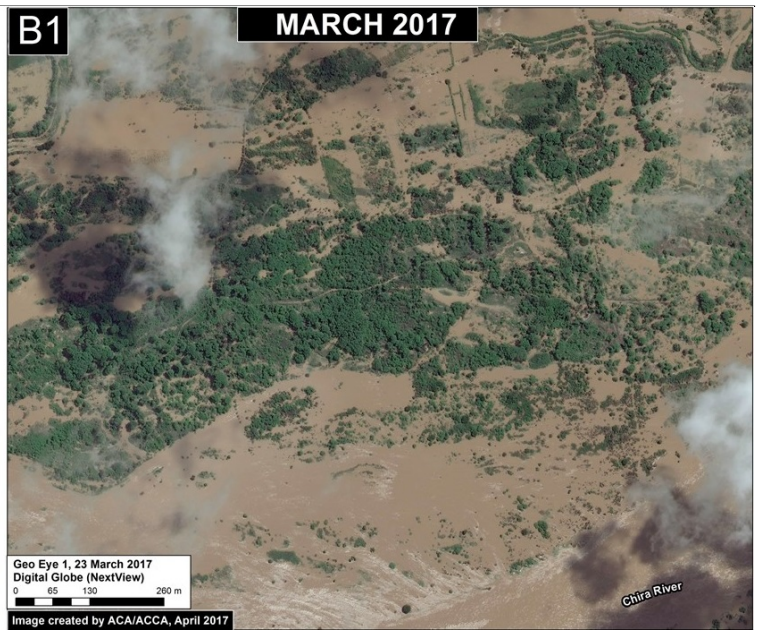
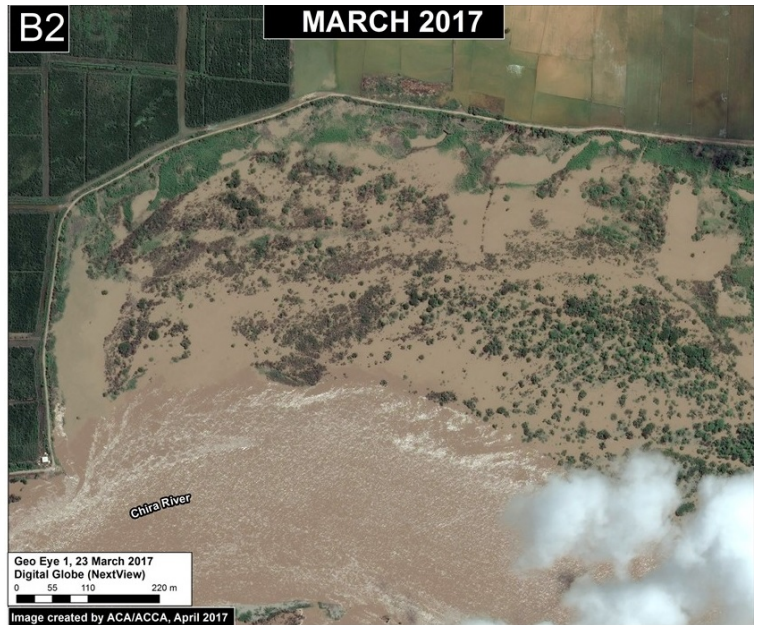


Image 57b. Data: Digital Globe (Nextview)





Inset B1. Data: Digital Globe (Nextview)



Inset B2. Data: Digital Globe (Nextview)

## La Leche River

**Image 57c** shows the flooding along a stretch of the La Leche River between January (left panel) and March 2017 (right panel). The yellow inset boxes indicate the areas of the follow-up zooms. Note the flooding of the PanAmerican Highway.



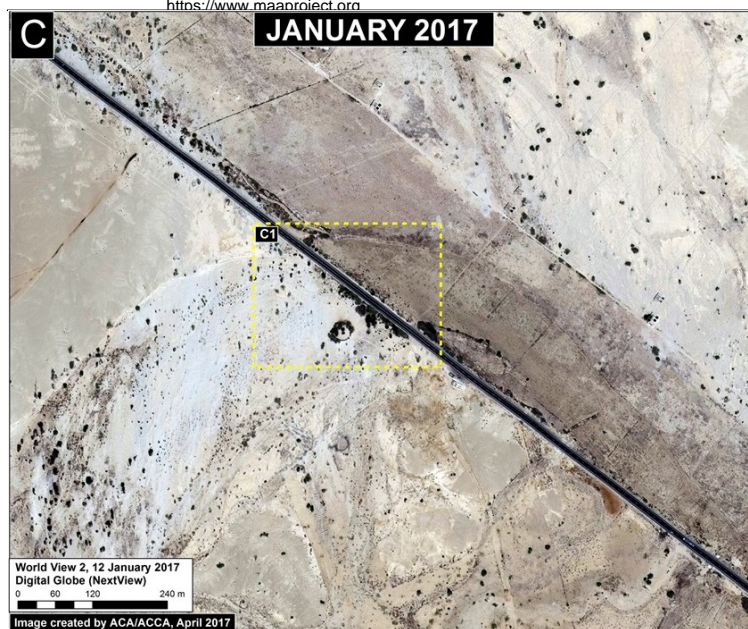


Image 57c. Data: Digital Globe (Nextview)



Inset C1. Data: Digital Globe (Nextview)

## Jequetepeque River

**Image 57d** shows the flooding along a stretch of the Jequetepeque River between January (left panel) and March 2017 (right panel). The yellow inset boxes indicate the areas of the follow-up zooms.



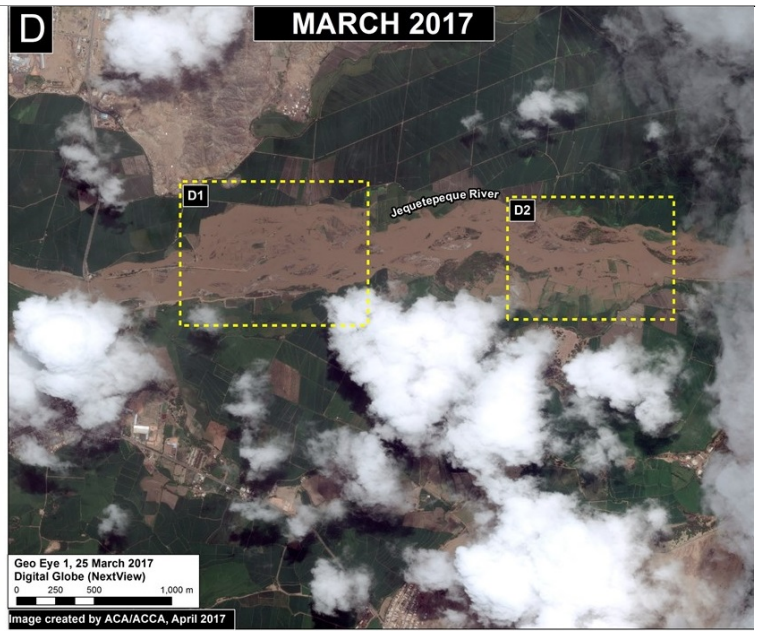
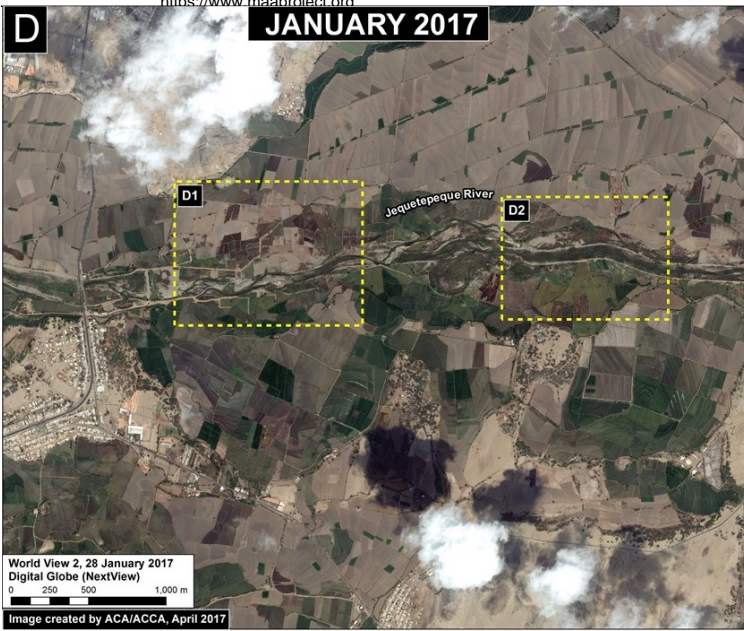


Image 57d. Data: Digital Globe (Nextview)



Inset D1. Data: Digital Globe (Nextview)





Inset D2. Data: Digital Globe (Nextview)

## References

- UNOSAT, 2017. Efectos del Niño Costero: Inundaciones en Perú, Departamentos de La Libertad & Ancash. \_Marzo\_20170321
- UNOSAT, 2017. Efectos del Niño Costero: Inundaciones en Perú, Departamentos de La Libertad & Ancash. \_Marzo\_20170321
- UNOSAT, 2017. Efectos del Niño Costero: Inundaciones en Perú, Departamentos de Piura. Marzo\_20170320

## Citation

Novoa S, Finer M (2017) High Resolution Images of the Flooding in Peru. MAAP: 57