

MAAP #97: Deforestation Surge in the Colombian Amazon, 2018 update

Deforestation trends in the Colombian Amazon. Data: UMD/GLAD, Hansen/UMD/Google/USGS/NASA, RAISG

The Colombian Amazon is currently experiencing a **deforestation surge** (see graph).

The surge started three years ago (2016) and peaked in **2017** with the highest annual deforestation on record (214,744 hectares).*

Deforestation remains high in **2018**: 156,722 hectares (based on early warning alert data).* If this estimate is confirmed, it would be the second highest on record (behind just 2017).

National experts indicate that **land grabbing** (acaparamiento de tierras) is an increasingly dominant direct driver of deforestation.

*Data from the University of Maryland. Annual data from Hansen et al (2013) [citation below] and 2018 data from GLAD alerts.

MAAP Colombia is a collaboration between [Amazon Conservation](#) and [Amazon Conservation Team](#)., funded by the [MacArthur Foundation](#).

We also present a **Base Map** that shows the **2018 deforestation hotspots**. Note that the deforestation is concentrated in three departments located in the transition area between the Amazon and Andes: Guaviare, Caqueta, and Meta.

We highlight the location of three critical areas that are examined in greater detail below: 1) **Llanos de Yari**, 2) **Chiribiquete- La Macarena**, and 3) **Tinigua National Park**.

For the Base Map and Zooms below, please click on the image to enlarge or download.

2018 DEFORESTATION IN THE COLOMBIAN AMAZON

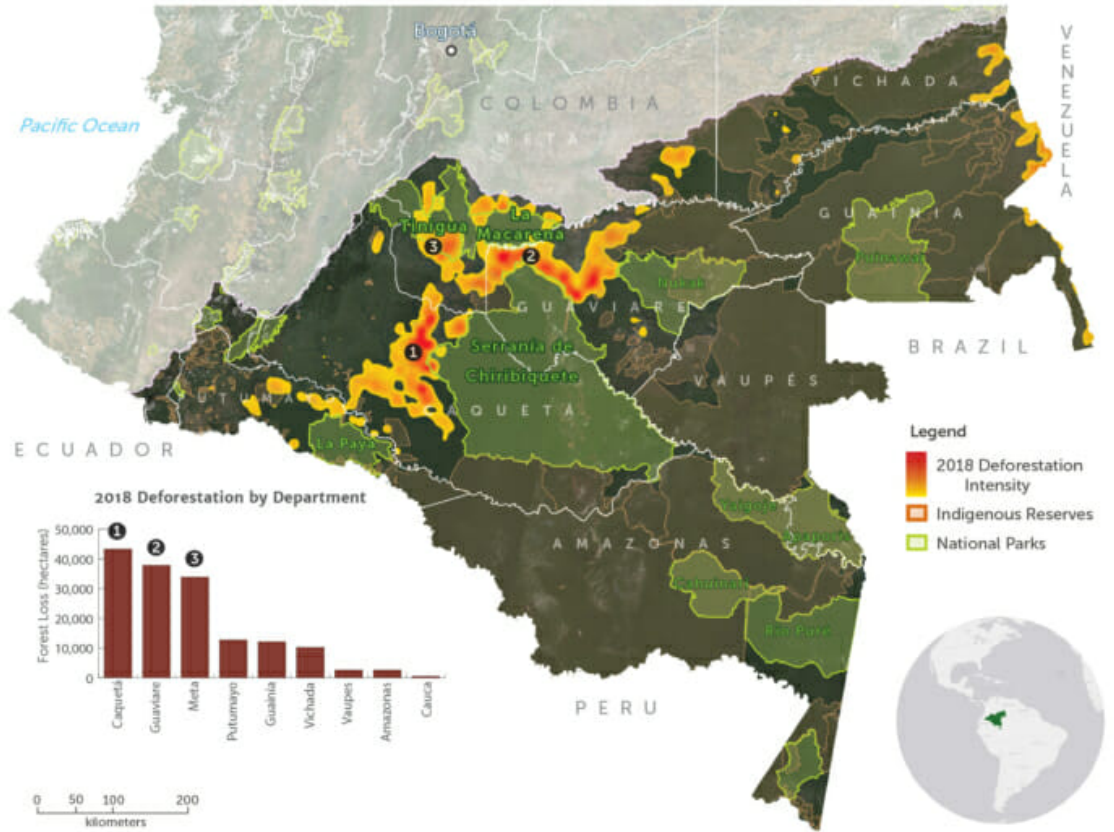
In 2018, following trends from the last two years, there has been a significant increase in the deforestation in the Colombian Amazon. This is believed to be linked to increased agriculture, cattle ranching, and land grabs.

Much of this deforestation is in the transition area between the Andes and Amazon, some of the most biodiverse stretches of forest in the world.

156,722 Ha
2018 Deforestation

Created by: Brian Hether & Alison Thorne
 Date Published: December 30, 2018
 Data used: Hansen Forest Loss 2000-2017
 Hansen Forest Loss Data through December 11, 2018

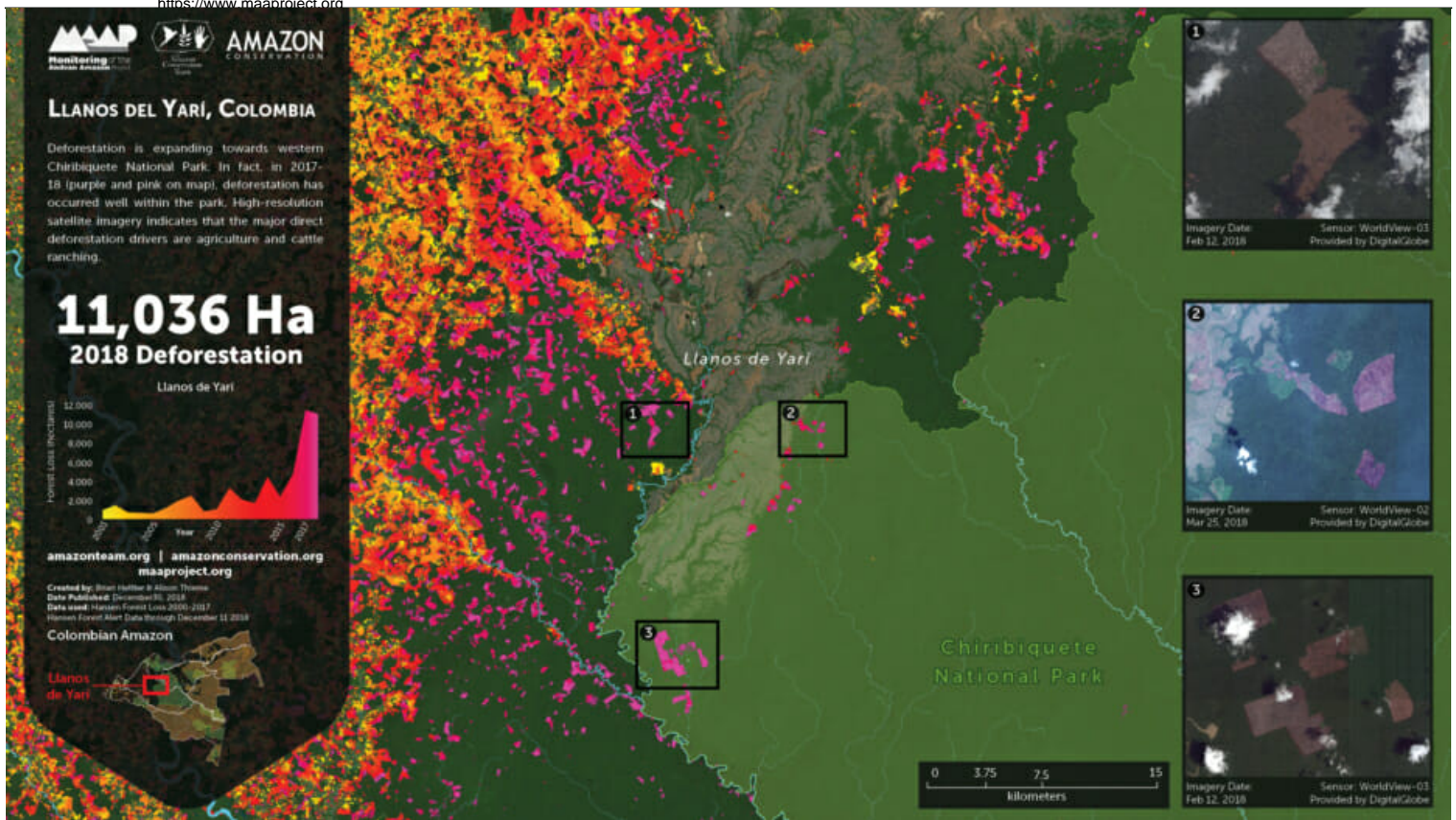
amazonteam.org | amazonconservation.org
maaproject.org



Base Map. Deforestation hotspots in the Colombian Amazon. Click to enlarge. Data: UMD/GLAD, Hansen/UMD/Google/USGS/NASA, PNN, SIAC, RAISG

Zoom 1: Llanos de Yari

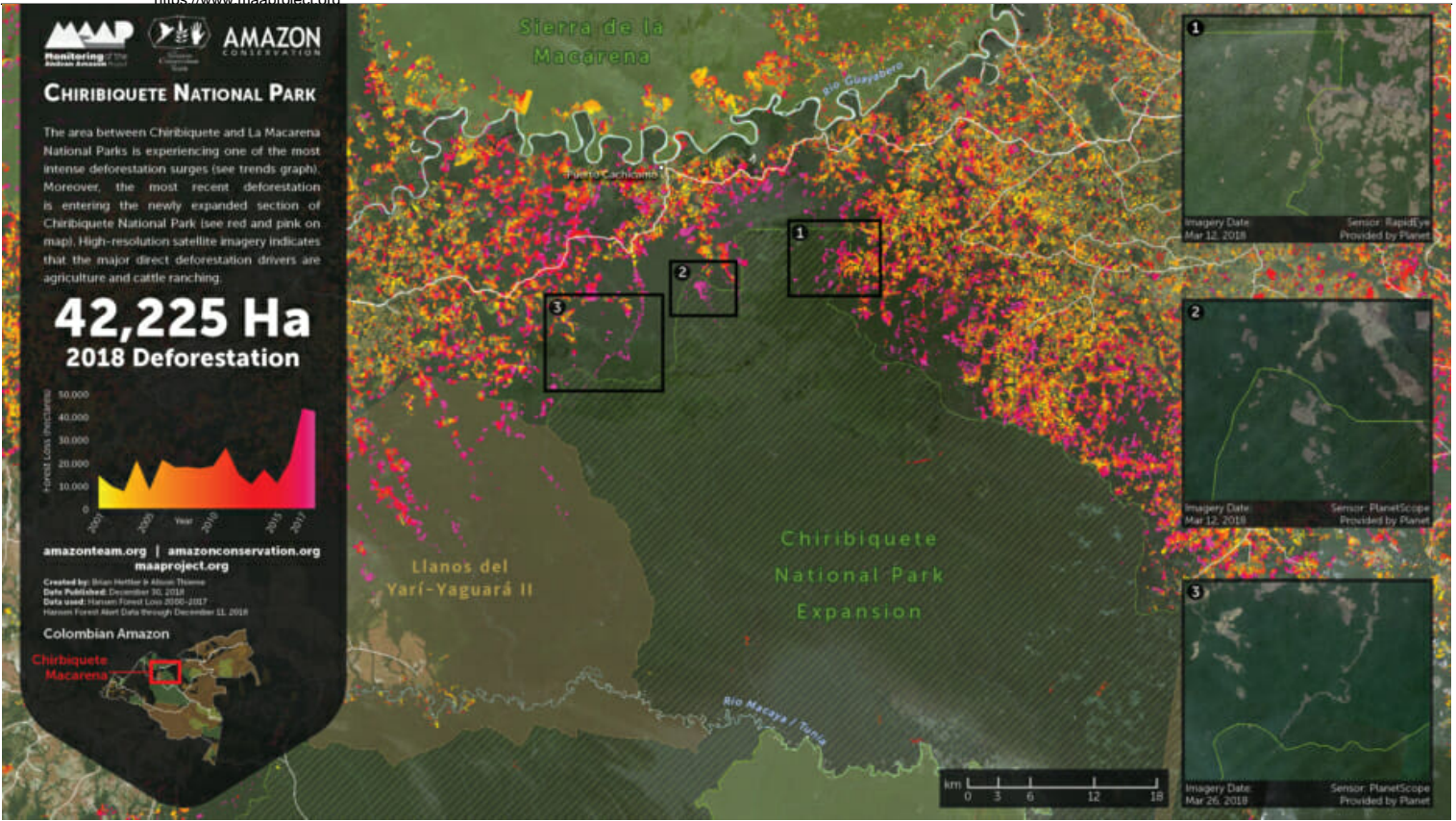
Zoom 1 shows deforestation expanding towards western **Chiribiquete National Park**. In fact, in 2017-18 (purple and pink on map), deforestation has occurred well within the park.



Zoom 1. Llanos de Yari. Click to enlarge. Data: DigitalGlobe, UMD/GLAD, Hansen/UMD/Google/USGS/NASA, PNN, SIAC, RAISG

Zoom 2: Chiribiquete - La Macarena

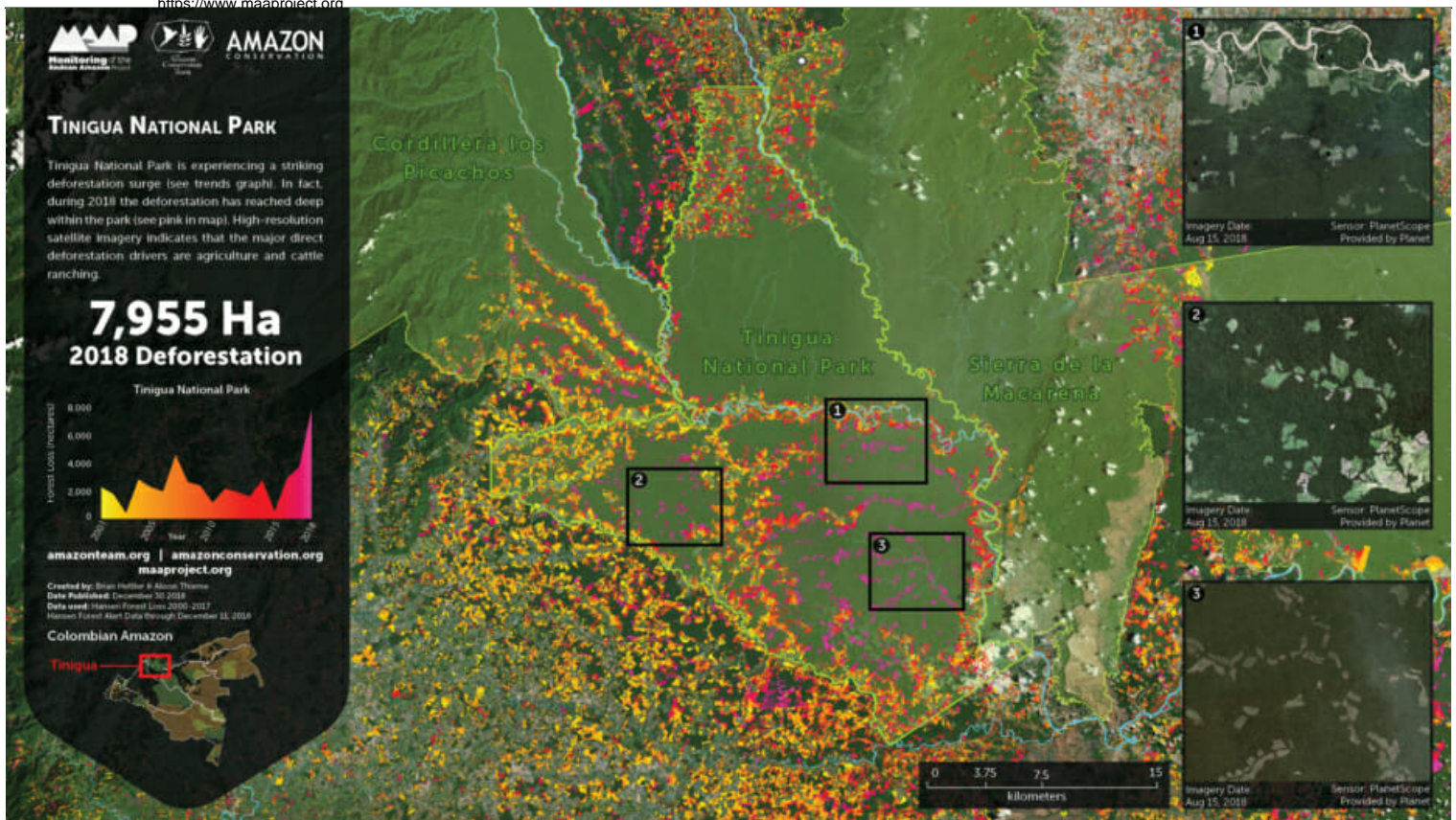
As we first reported in [MAAP #86](#), the area between **Chiribiquete and La Macarena National Parks** is currently experiencing one of the most intense deforestation surges. **Zoom 2** shows the most recent deforestation (indicated in red and pink) is entering the newly expanded section of Chiribiquete National Park.



Zoom 2. Chiribiquete - La Macarena. Click to enlarge. Data: Planet, UMD/GLAD, Hansen/UMD/Google/USGS/NASA, PNN, SIAC, RAISG.

Zoom 3: Tinigua National Park

Zoom 3 shows how 2018 has seen a surge of deforestation deep within **Tinigua National Park** (see pink).



Zoom 3. Tinigua National Park. Click to enlarge. Data: Planet, UMD/GLAD, Hansen/UMD/Google/USGS/NASA, PNN, SIAC, RAISG

References

Planet Team (2017). Planet Application Program Interface: In Space for Life on Earth. San Francisco, CA. <https://api.planet.com>

Hansen, M. C., P. V. Potapov, R. Moore, M. Hancher, S. A. Turbanova, A. Tyukavina, D. Thau, S. V. Stehman, S. J. Goetz, T. R. Loveland, A. Kommareddy, A. Egorov, L. Chini, C. O. Justice, and J. R. G. Townshend. 2013. "High-Resolution Global Maps of 21st-Century Forest Cover Change." *Science* 342 (15 November): 850–53. Data available on-line from: <http://earthenginepartners.appspot.com/science-2013-global-forest>.

Citation

Hettler B, Thieme A, Finer M (2018) Deforestation Surge in the Colombian Amazon: 2018 update. MAAP: #96.

